

# Rose Point ECS - Administrator's Guide



## The Program Disc

The standard Rose Point ECS Program Disc contains the following files and folders:

AutoRun.inf	This file contains instructions to Windows for how to display the disc in the Windows Explorer and to not scan the disc for music, pictures, or videos when it is inserted. This file is ignored when it is not in the root folder of a CD or DVD ROM.
Setup.exe	This is the Rose Point setup program. It uses the files and instructions found in the Setup.zip file to install a Rose Point program such as Rose Point ECS.
Setup.zip	This is a standard "ZIP" file that contains most of the files that make up Rose Point ECS along with instructions used by Setup.exe for how they should be installed.
Modules	This is a folder that contains optional modules that are presented during the setup process. It usually contains the Coast Pilot and USACE Ports and Facilities guide books and may include other options as well.

## Installation Guidelines

This section provides guidelines and best-practices for successfully installing Rose Point ECS and its updates. We may not be able to provide technical support for installations that do not conform to these guidelines.

### User Accounts

You must install Rose Point ECS and its updates from the same Windows User Account you wish to operate it from. Additionally, Rose Point ECS must be installed from an account with Administrative privileges. This means that, if you wish to operate Rose Point ECS from a Standard User account, you must first promote that account to Administrator for the purposes of installing Rose Point ECS. Once Rose Point ECS has been installed, you may then demote that account to Standard User for operation if you wish. You will also need to promote the account to Administrator when installing any program updates.

**Note:** *Right-clicking on the installer option and choosing "Run as Administrator..." is not a way to get around this problem, since it is equivalent to installing Rose Point ECS from the account named Administrator.*

### File System Permissions

Rose Point ECS must have full access to specific folders. You will find a complete list of these folders below, in the section titled, "**Folders Used by Rose Point ECS.**"

If your organization utilizes Windows enterprise features, such as Active Directory Domains and Group Policies, you should configure those features so they do not interfere with our access to these folders.

## Installing from a Disc Image

If you wish to install Rose Point ECS to several computer systems by imaging them from a pre-configured imaging system, following these guidelines will help ensure successful and trouble-free installation on the imaged systems.

Do not Activate Rose Point ECS on the source imaging system. If you do, it can create problems with our licensing system. Instead, use Rose Point ECS' 10-Day Trial Period to customize your configuration. Customization includes: designing custom instrument panel layouts, modifying options from the "Options..." window, etc.

Be sure you choose an imaging tool that does not clone Volume ID's. Instead, you should use a tool that will give each imaged system unique Volume IDs.

After you have deployed your image to a computer system intended for operation, you should Activate Rose Point ECS from that system, using the correct Rose Point ECS Product ID intended for the vessel that system will be used aboard.

## Folders Used by Rose Point ECS

### The Program Folder

The default location for the Rose Point ECS program is "C:\Program Files\Rose Point ECS 2011" but that can be changed using the setup program. (On 64-bit Windows systems, the default location will be "C:\Program Files (x86)\Rose Point ECS 2011".)

### The Charts Folder

The default location for chart installation is "C:\Charts" and that can also be changed using the setup program. Rose Point ECS requires read access to this folder in order to use charts and requires write access in order to install or update charts.

### The Rose Point Navigation Systems Data Folders

In addition to the program and chart folders, Rose Point ECS uses a hidden folder for data storage. This folder is referred to as the "Rose Point Navigation Systems data folder. The location of this folder depends on the version of Windows you are using as well as Windows installation options. The easiest way to locate the folder is to start Rose Point ECS and then enter \$data into the Find Box. That will open a Windows File Explorer at the correct folder. Rose Point ECS requires read and write access to this folder in order to function properly.

With most normal Windows installations, the folder will be one of the following:

**Windows 2000 or Windows XP:** "C:\Documents and Settings\{User-Name}\Application Data\Rose Point Navigation Systems\Rose Point ECS 2011".

**Windows Vista - Windows 10:** "C:\Users\{User-Name}\AppData\Local\Rose Point Navigation Systems\Rose Point ECS 2011".

Where {User-Name} is replaced by the name of the Windows user account being used for Rose Point ECS.

One of the following folders is used to maintain license information. Read access to this folder is required to use Rose Point ECS and write access is required in order to activate Rose Point ECS:

**Windows 2000 or Windows XP:** "C:\Documents and Settings\All Users\Application Data\CENKEYS"

**Window Vista - Windows 10:** "C:\ProgramData\CENKEYS"

## Registry Keys

All program options are stored in the following registry key, read/write access is required for normal operation:

HKEY\_CURRENT\_USER\Software\Rose Point Navigation Systems

Some license information is stored in the following keys:

HKEY\_LOCAL\_MACHINE\SOFTWARE\CENKEYS

HKEY\_LOCAL\_MACHINE\SOFTWARE\Rose Point Navigation Systems

The setup and update programs will require read/write access to those keys.

## Customizing Setup

It is possible to create a custom "module" which contains files to be installed by the Rose Point ECS setup program. These modules may add files to the program, data, and chart folders as described in "Folders Used by Rose Point ECS".

Each module is contained in a standard ZIP file that has been renamed to have a file type of ".cepkg" instead of ".zip". Inside the ZIP file, the contents of a folder named "Program" is copied to the Program Folder, the contents of a folder named "Data" is copied to the Data Folder, and the contents of a folder named "Charts" is copied to the Chart Folder. Any folders nested within Program, Data, or Charts are also copied during installation.

As an example, let's say you have customized admin.ini and screens.xml files. Follow these instructions to create a module that will cause setup to copy them there:

1. **IMPORTANT:** Enable the Windows Explorer option to show file types first. If you don't do this, the rename later will not work correctly (but it will look like it did). To enable this option, open a Windows Explorer, use "Organize > Folder and Search Options (Windows 7 and newer)" or "Tools > Folder Options (Windows XP)", switch to the View page, and uncheck "Hide extensions for known file types".
2. Create an empty folder somewhere on your PC to work in and open that folder in Explorer.
3. Create a folder called "Data" in your working folder folder.
4. Copy your admin.ini to the new "Data" folder.
5. Create a folder called "xui" in the Data folder.
6. Copy your screens.xui file to the new "xui" folder.

7. Right-click on the "Data" folder and select "Send to > Compressed (zipped) folder"
8. Rename the ZIP file to "MyModule.cepkg"
9. Create a new folder called "Setup" in your working folder.
10. Copy everything from the standard Rose Point ECS Program Disc to the Setup folder.
11. Copy your MyModule.cepkg file to the Modules folder inside the Setup folder.

The Setup folder now contains a custom Rose Point ECS Program Setup that you can use to install Rose Point ECS along with your customizations. We recommend you copy the contents of the Setup folder to a USB Flash Drive and use that to setup your PC's.

## Firewall Considerations

Rose Point ECS uses the following Internet hosts for various services:

*.coastalexplorer.net	Product activation, updates, weather, chart purchases.
*.rosepointnav.com	Other Rose Point services.
*.rosepoint.com	Other Rose Point services.
*.weather.gov	River stage information.
*.noaa.gov	NOAA RNC and NOAA ENC chart updates.
*.nationalmap.gov	Aerial Photo Web Maps and Topographic Web Maps
*.ienccloud.us	USACE IENC chart updates.
*.amazonaws.com	Redirects from other USACE services.
*.teamviewer.com	Required for TeamViewer remote support. (Ports 80, 5938)
*.dyngate.com	Required for TeamViewer remote support. (Ports 80, 5938)
*.braintreegateway.com	Secure credit card processing for Primar chart purchases.

Many web services are changing from port 80 (HTTP) to 443 (HTTPS), so we recommend opening port 80 and port 443 for all the above, or simply not using a restrictive firewall in the first place. Please read the **Caveat** below carefully.

**Caveat:** At the time of this writing, the above list of domains constitutes the complete set that Rose Point ECS depends on for Internet services. However, we strongly recommend that you **not** restrict your computer systems to only access online services at the above locations. In particular, Rose Point Navigation Systems has no control over the locations of non-Rose Point services (such as those from NOAA, the USACE, etc.) and they should be considered as changing at any time. Additionally, some of the services at the above locations may redirect to services at other locations, and those may also change at any time, preventing Rose Point ECS from obtaining those services.

## Custom Options

It is possible to set custom default values for any options in Rose Point ECS. These defaults are used by the program initially and when the Reset button in the Options window is used.

To specify custom default option values, create a text file that starts with a line containing:

[Default Options]

That line should be followed by lines containing the names and default values for each option you would like to customize.

The file containing the default options must be called "admin.ini" and must be placed in the Rose Point Navigation Systems data folder.

Refer to Appendix A for a list of option names and their potential values.

## Custom Instrument Panels and Screen Layouts

The "Instruments" Task Pane and any custom task panes that have been added as well as any custom screen layouts that have been saved are all stored in a single file called "screens.xui". This file is in a folder called "xui" which is also in the Rose Point Navigation Systems data folder (see the above section for instructions on locating that folder on your PC).

Besides the screens.xui file, the custom screen layout feature also uses folder called "Screens" which contains thumbnail images of the custom screen layouts.

## Users, Roles, and Privileges

Rose Point ECS can be configured to require users to **log in** before using the program. Different users can be given different privileges. For example, more experienced users might be allowed to make changes to certain settings that less experienced users are not. Or perhaps only system administrators should be allowed to install charts.

Rose Point ECS allows an administrator to control what users can and cannot do with a set of **privileges**. Each privilege represents one thing that can be enabled or disabled. For example, one privilege is called *ToolsOptionsVDR* and it controls whether or not the **Main Menu > Options > Login Administration** options panel is available. Rose Point ECS provides many such privileges so that administrators have a great deal of control over what users are allowed to do with the program.

Privileges are not given to users directly. Instead, Rose Point ECS uses the concept of **role** to group the privileges of a type of user. For example, a user with the role of *Administrator* might be allowed to do anything in the program, and a user with the role of *Dish Washer* might not be able to do much other than look at the chart. Each role is simply a name to describe the role and a set of privileges that are given to users with that role. The use of roles makes it very easy to assign the same privileges to several users and to simultaneously change the privileges of all those users later if needed.

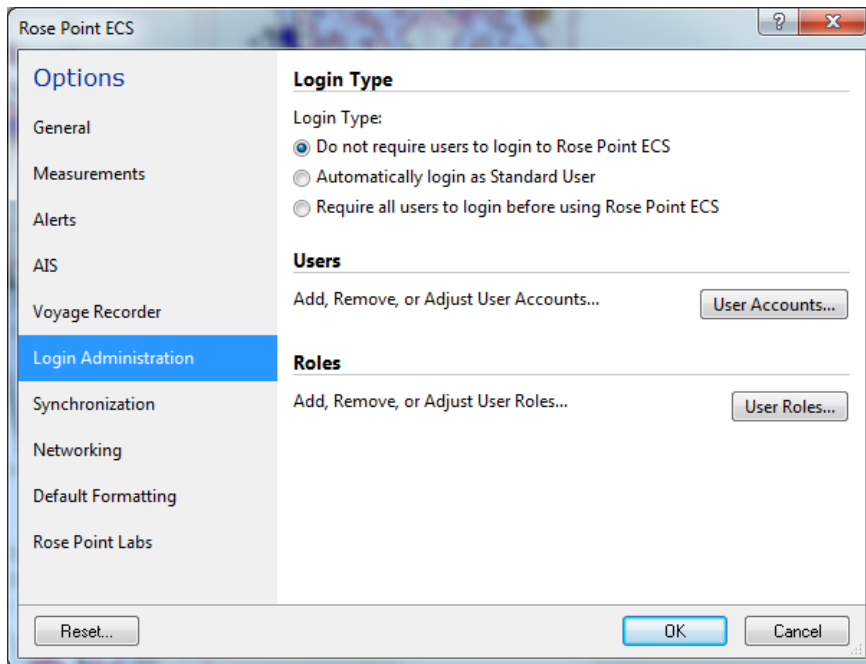
When Rose Point ECS is started and no roles have been defined, it will automatically create a role called *Administrator* that has the Administrator privilege. A role called *Standard User* is also

defined that includes all privileges except Administrator. This is done as a convenience and these roles can be removed or changed as needed by an administrator.

Each user has a name, a password, a password hint, and a role. Once a name has been assigned, it cannot be changed, but the other properties of a user can. When Rose Point ECS starts up (and is configured to require login) a window will appear listing all of the users. To login, just select the right name from the list and enter the correct password, if a password has been set for the **User Account**. The password hint is provided as a way to jog a user's memory in case the password is forgotten.

## Configuration

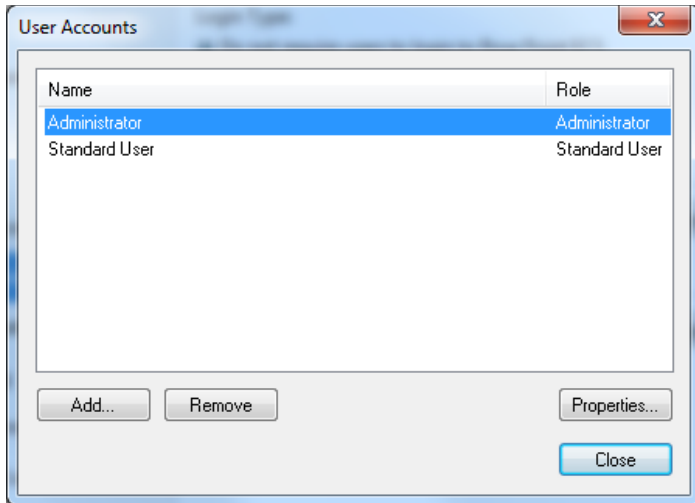
When the current user is a Rose Point ECS Administrator, a **Login Administration** page is added to the **Main Menu > Options** window. This page lets the administrator manage users and roles. Only users with the *Administrator* privilege can add, remove, or modify the users and roles.



## Adding a new User

To add a new user to the system, first press the **User Accounts...** button. From the **User Accounts** window that appears, press the **Add...** button and enter their name, role, password, and a password hint. The password must be entered twice to ensure it is not mistyped. The optional hint is something that the user can retrieve when they are trying to log in but can't remember their password.

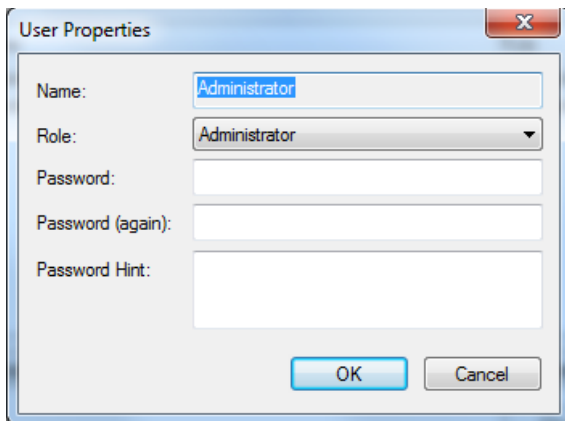




## Modifying or Removing a User

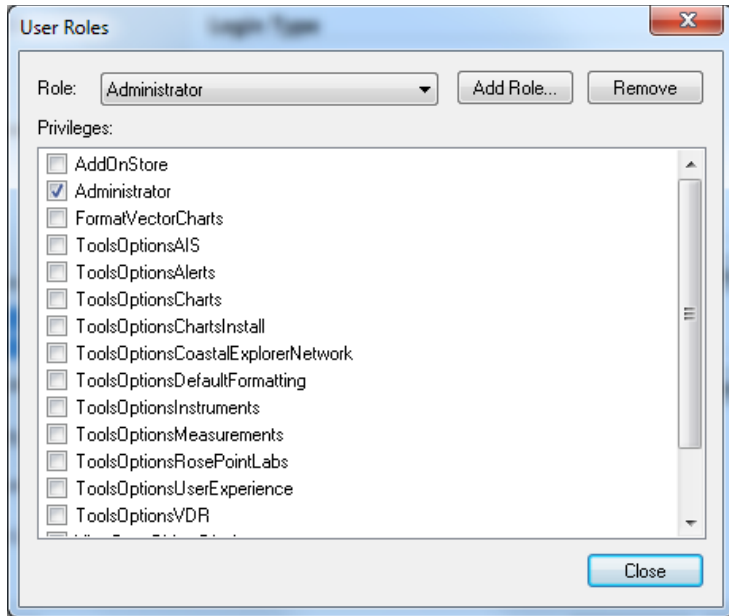
Pressing the **Remove** button will remove the selected user from the system.

The **Properties** button lets the administrator change the user's role, password, or password hint. A user's name cannot be changed; a new user must be created with the desired name and the old user can be deleted.



## Modifying or Removing a Role

The **User Roles...** button in **Main Menu > Options > Login Administration** leads to a window where roles can be added, removed, and changed.



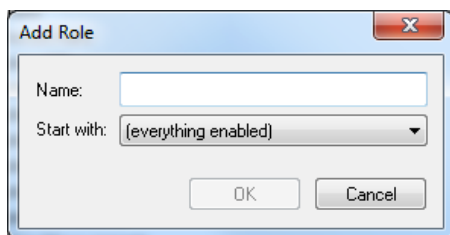
The role to modify or remove can be selected in the drop down list labeled **Role**.

The privileges of a role can be modified by checking or un-checking the appropriate boxes. Placing a check near a privilege allows users with that role to perform an action and clearing the check prevents users from performing that action. Users with the “Administrator” privilege can do anything.

Roles may be deleted by clicking the **Remove** button. Removing a role that has users assigned to it will remove all privileges from those users. If this happens accidentally, a new role may be created with the same name as the one that was deleted and the appropriate privileges can be added manually, or those users can be given a new role.

## Adding a new Role

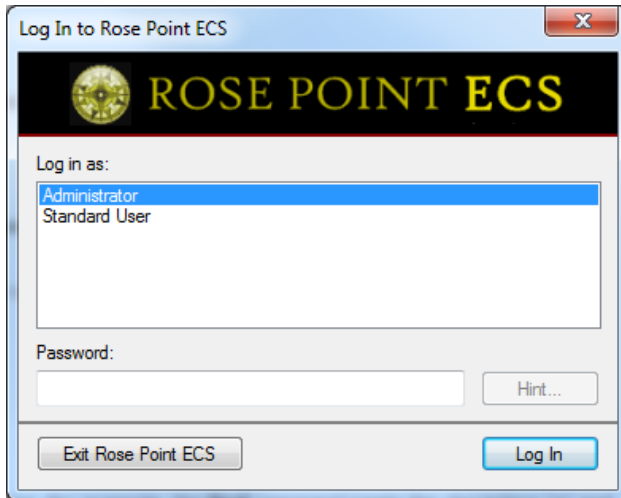
A new role can be added by pressing the **Add Role...** button.



Enter a name for the new role and select an option from the **Start with** box which contains (everything enabled), (nothing enabled), and a list of existing roles. Selecting the (everything enabled) option will actually enable all privileges except Administrator in the new role. Selecting a role will copy the privilege from that role to the new role as a starting point. To start from scratch creating a new role that has few privileges, start with (nothing enabled) and add the necessary privileges. To create a role that has many privileges, start with (everything enabled) and remove the necessary privileges.

## Logging In

When logging in is required, Rose Point ECS will prompt for a user name and password at startup and will add a “Log Off” command to the **Main Menu** (right above Exit). The “Log Off” command will hide the Rose Point ECS application window and display the login dialog box. The log in dialog box will include an “Exit Rose Point ECS” command. The log in dialog box will list all of the user accounts to make it easier to log in. The last user to log in will be pre-selected in the list when the dialog box appears.



## Admin.ini Settings

Administrative settings are stored in a standard Windows .INI file called “Admin.ini” which is in the “C:\Documents and Settings\All Users\Application Data\Rose Point Navigation Systems” folder when using Windows 2000 or Windows XP and in “C:\AppData\Rose Point Navigation Systems” folder when using Windows Vista or newer. This file makes it easy to adjust options that do not appear in the user interface of Rose Point ECS, and to distribute those settings to all the vessels of a fleet.

Please note that this is a plain text file, so security measures should be taken to prevent the file from being modified by unauthorized users! This can be done with standard Windows security settings.

The [Options] section lists any administrative options that apply to all users and roles. These options include:

RequireLogin=yes|no

If the value is yes, then users are required to log in. If the value is no then users are not required to log in and it is always assumed that the current user has the *Administrator* privilege. The default value is no.

HaveOwnShip=yes|no

If the value is no, then all features related to “own- ship” and navigation are removed. This includes things like Cruise Mode and Move Boat Here. The setting is provided when Rose Point ECS will be used ashore and the navigation features are not needed. The default value is

yes.

## Users

The [User:\*] sections describe all of the users, their roles, and passwords. (Passwords are encoded so that reading this file is not enough to be able to login as someone else.) Each user has a section called “[User:<name>]” where <name> is the name they will use to login with. Each user section contains the following values:

Password=<encoded form of the user’s password>

PasswordHint=<a hint about what the user’s password is>

Role=<what role does the user have>

## Feature Access Restrictions

The [Role:\*] sections describe the various roles that users can have. Each role has a section called “[Role:<name>]” where <name> is the name of the role as shown in the User Properties dialog box. Each role section contains a list of the privileges assigned to that role. Valid privilege identifiers include:

AddOnStore

Administrator

FormatVectorCharts

ToolsOptionsAIS

ToolsOptionsAlerts

ToolsOptionsCharts

ToolsOptionsChartsInstall

ToolsOptionsCoastalExplorerNetwork

ToolsOptionsDefaultFormatting

ToolsOptionsInstruments

ToolsOptionsMeasurements

ToolsOptionsRosePointLabs

ToolsOptionsUserExperience

ToolsOptionsVDR

ViewBaseObjectDisplay

ViewFullObjectDisplay

ViewStandardObjectDisplay

## Default Options

The [ResetAll] section controls exactly what settings are reset when the **Reset All** command is used. This section is simply a list of setting identifiers and the values they should be reset to. Valid value identifiers are listed in *Appendix A*.

## Appendix A: Option Names and Values

The following tables provide the name, type, and default value for each option. Refer to Appendix B for more information about the different types of values used by these options.

### Vessel Configuration Options

OwnShip.Name	TEXT	""
OwnShip.CallSign	TEXT	""
OwnShip.LengthOverall	DISTANCE	""
OwnShip.Beam	DISTANCE	""
OwnShip.Draft	DEPTH	""
OwnShip.BridgeClearance	HEIGHT	""
OwnShip.CruisingSpeed	SPEED	"5 kt"
OwnShip.PortTurnRadius	DISTANCE	""
OwnShip.StarboardTurnRadius	DISTANCE	""
OwnShip.TowLength	DISTANCE	""
OwnShip.TowBeam	DISTANCE	""
OwnShip.TowOffset	DISTANCE	""

### AIS Display and Alert Options

AIS.ShowTracks	BOOL	"yes"
AIS.TrackLength	PERIOD	"30 min"
AIS.ShowPredictors	BOOL	"yes"
AIS.ShowVesselNames	BOOL	"yes"
AIS.ShowVesselSpeeds	BOOL	"yes"
AIS.FlashLostAndDangerousTargets	BOOL	"yes"
AIS.HideLostTargetsAfter	PERIOD	"3 min"
AIS.DangerCPA	DISTANCE	"0.25 nm"
AIS.DangerTCPA	PERIOD	"5 min"
AIS.ShowBaseStations	BOOL	"no"
AIS.ShowAidsToNavigation	BOOL	"no"
AIS.ShowSearchAndRescuePlanes	BOOL	"no"
AIS.ShowClassBTargets	BOOL	"yes"
AIS.ShowDeadReckonedPosition	BOOL	"no"
AIS.AssumeStationaryTargetsAreSafe	BOOL	"no"
AIS.Logging	BOOL	"no"
AIS.DefaultVesselColor	COLOR	"S52:RESBL"
AIS.ShowVessels	BOOL	"yes"

AIS.ShowTracks	BOOL	"yes"
AIS.TrackLength	PERIOD	"30 min"
AIS.ShowPredictors	BOOL	"yes"
AIS.ShowVesselNames	BOOL	"yes"
AIS.FlashLostAndDangerousTargets	BOOL	"yes"
AIS.HideLostTargetsAfter	PERIOD	"3 min"
AIS.DangerCPA	DISTANCE	"0.25 nm"
AIS.DangerTCPA	PERIOD	"5 min"
AIS.ShowBaseStations	BOOL	"no"
AIS.ShowAidsToNavigation	BOOL	"no"
AIS.ShowSearchAndRescuePlanes	BOOL	"no"
AIS.ShowClassBTargets	BOOL	"yes"
AIS.ShowDeadReckonedPosition	BOOL	"no"
AIS.AssumeStationaryTargetsAreSafe	BOOL	"no"
AIS.ShowPredictedPassingLocations	BOOL	"true"
AIS.ShowVesselSpeeds	BOOL	"yes"
AIS.HilightDangerZones	BOOL	"no"
AIS.Logging	BOOL	"no"
AIS.BoundaryCrossingAlarm	BOOL	"no"

## Alert and Alarm Options

Alerts.CourseUpdateAtWaypoints	BOOL	"true"
Alerts.BoundaryCrossing	BOOL	"true"
Alerts.DepthAbove	BOOL	"false"
Alerts.DepthAboveValue	DEPTH	"1000 ft"
Alerts.DepthBelow	BOOL	"false"
Alerts.DepthBelowValue	DEPTH	"10 ft"
Alerts.XTEOver	BOOL	"true"
Alerts.XTEOverValue	DISTANCE	"0.25 NM"
Alerts.Obstacles	BOOL	"true"
Alerts.LookAhead	PERIOD	"1 min"
Alerts.TimeBetweenAlerts	PERIOD	"30 secs"
Alerts.AudioDevice	AUDIO_DEVICE	"beeper"
Alerts.EnableVoiceAlerts	BOOL	"true"
Alerts.WhichVoice	SPEECH_VOICE	""
Alerts.Volume	SPEECH_VOLUME	"100"
Alerts.SpeechRate	SPEECH_RATE	"0"

## Default Formatting Options

Default.TrackLineColor	COLOR	"red"
Default.TrackLineSize	LINESIZE	"1px"
Default.HeadingLineColor	COLOR	"black"
Default.HeadingLineStyle	LINESTYLE	"solid"
Default.HeadingLineSize	LINESIZE	"2px"
Default.SternLineColor	COLOR	"black"
Default.SternLineStyle	LINESTYLE	"dashed"
Default.SternLineSize	LINESIZE	"2px"
Default.BoundaryLineColor	COLOR	"red"
Default.BoundaryLineSize	LINESIZE	"1px"
Default.MarkSymbol	MARKSYM	"square"
Default.MarkTextColor	COLOR	"blue"
Default.MarkBackgroundColor	COLOR	"yellow"
Default.MarkFont	FONT	"8pt Tahoma"
Default.EventSymbol	MARKSYM	"circle"
Default.EventTextColor	COLOR	"blue"
Default.EventBackgroundColor	COLOR	"yellow"
Default.EventFont	FONT	"8pt Tahoma"
Default.AnnotationSymbol	MARKSYM	"circle"
Default.AnnotationTextColor	COLOR	"blue"
Default.AnnotationBackgroundColor	COLOR	"yellow"
Default.AnnotationFont	FONT	"8pt Tahoma"
Default.BoundaryCircleSymbol	MARKSYM	"circle"
Default.BoundaryCircleTextColor	COLOR	"blue"
Default.BoundaryCircleBackgroundColor	COLOR	"yellow"
Default.BoundaryCircleMarkFont	FONT	"8pt Tahoma"

## Units of Measurement and Display Formats

Units.SlideSpeed	SLIDESPEEDUNITS	"fps"
Units.Depth	DEPTH_UNITS	"fathoms"
Units.Distance	DISTANCE_UNITS	"nautical-miles-and-yards"
Units.Height	HEIGHT_UNITS_	"feet"
Units.LocationFormat	LOCATION_FORMAT	"degrees-and-minutes"
Units.Speed	SPEED_UNITS	"knots"
Units.Temperature	TEMPERATURE_UNITS	"fahrenheit"
Units.TimeFormat	TIME_FORMAT	"twentyfour-hour"
Units.BearingFormat	BEARING_FORMAT	"magnetic"



Units.Fuel	VOLUME_UNITS	"gallons"
Units.Sailing	SAILING	"mercator"

## Voyage Recorder Options

VDR.RecordVoyageData	BOOL	"yes"
VDR.KeepFor	PERIOD	"7 days"
VDR.AllNavigationData	BOOL	"yes"
VDR.AIS	BOOL	"yes"
VDR.RadarImage	BOOL	"no"
VDR.FishFinderImage	BOOL	"no"
VDR.Video	BOOL	"no"

## Auto-Save Options

Documents.AutoSave	BOOL	"yes"
Documents.AutoSaveInterval	PERIOD	"1 min"

## Application Options

Admin.LoginType	LOGIN_TYPE	"none"
APP.ShoreStation	BOOL	"no"
APP.ShowLatLonEntryHelper	BOOL	"yes"
APP.Exclusive	BOOL	"no"
APP.HideStartBar	BOOL	"no"
APP.UpdateClockFromGPS	BOOL	"no"
Toolbar.ClockShowSeconds	BOOL	"false"
Toolbars.AutoHide	BOOL	"false"
WINDOW.ShowStatusBar	BOOL	"yes"

## Chart Options

Charts.AutoInstallCD	BOOL	"yes"
Maptech.ChartKitFolder	DIRECTORY	"C:\\ChartKit"
Maptech.Contour3DFolder	DIRECTORY	"C:\\3dcharts"
S63.UserPermit	STRING	""

## Miscellaneous Options

Tracking.Enabled	BOOL	"yes"
NetMux.AutoConnect	BOOL	"yes"
StandardDisplay.Scale	STRING	"1:10,000"
StandardDisplay.Orientation	STRING	"north-up"
StandardDisplay.FollowMode	FOLLOW_MODE	"center"

## Appendix B: Option Types

The following value types are used by the options:

TEXT	This is arbitrary text.	
DISTANCE	This represents a linear distance and the units must be included. For example "100 ft". The valid units include:	
	nm	Nautical miles
	mi, mile, miles	Statute miles
	yd, yds, yard, yards	Yards
	ft, foot, feet	Feet
	in, ins, inch, inches	Inches
	km	Kilometers
	m, meter, meters	Meters
	cm	Centimeters
	mm	Millimeters
DEPTH	The represents a depth value and the units must be included. Valid units include:	
	f, fm, fms, fathoms	Fathoms
	ft, foot, feet	Feet
	m, meter, meters	Meters
HEIGHT	The represents a depth value and the units must be included. Valid units include:	
	ft, foot, feet	Feet
	m, meter, meters	Meters
BOOL	This represents a true/false, on/off, or yes/no value. Valid values include:	
	true, yes, on	Option is enabled
	false, no, off	Option is disabled
PERIOD	This represents a period of time. The units must be specified. Multiple values and units may be used as in "2h 30m". Valid units include:	
	w	Weeks
	d	Days
	h	Hours
	m	Minutes
	s	Seconds
SPEED	This represents a speed. The units must be specified. Valid units include:	
	kn, kt, kts, knots	Knots
	m/h, mph	Miles (statute) per hour

k/h, kph

Kilometers per hour

LOGIN\_TYPE This represents the login mode that should be used when Rose Point ECS is first launched:

none

no login required

automatic

Automatically log-in to the "Standard User" account.

strict

Always require a user to log-in when Rose Point ECS is first launched.